

## Departure Route Description

**Rwys 07, 19, 25:** Expect radar vectors to filed/assigned route. Contact Victoria Terminal passing **1500** unless instructed otherwise by ATC. Maintain **3000** or as assigned.

**Rwy 07 – ½:** Restricted to Cat A & B acft only. Requires a minimum climb gradient of **260 ft/NM to 500**. Climb hdg **069° to 700**. Then climbing RIGHT turn hdg **204°** for vectors.

**Note:** Antenna to 217 ASL aprx 0.1 NM past departure end of rwy, 200' RIGHT of rwy centreline.

**Rwy 19 – ½:** Climb hdg **189°** for vectors.

**Note:** Trees to 297 ASL aprx 0.3 NM past departure end of rwy.

**Rwy 25 – ½:** Requires a minimum climb gradient of **410 ft/NM to 600**. Climb hdg **249°** for vectors.

DEPARTURE CLIMB RATE V/V (FPM)

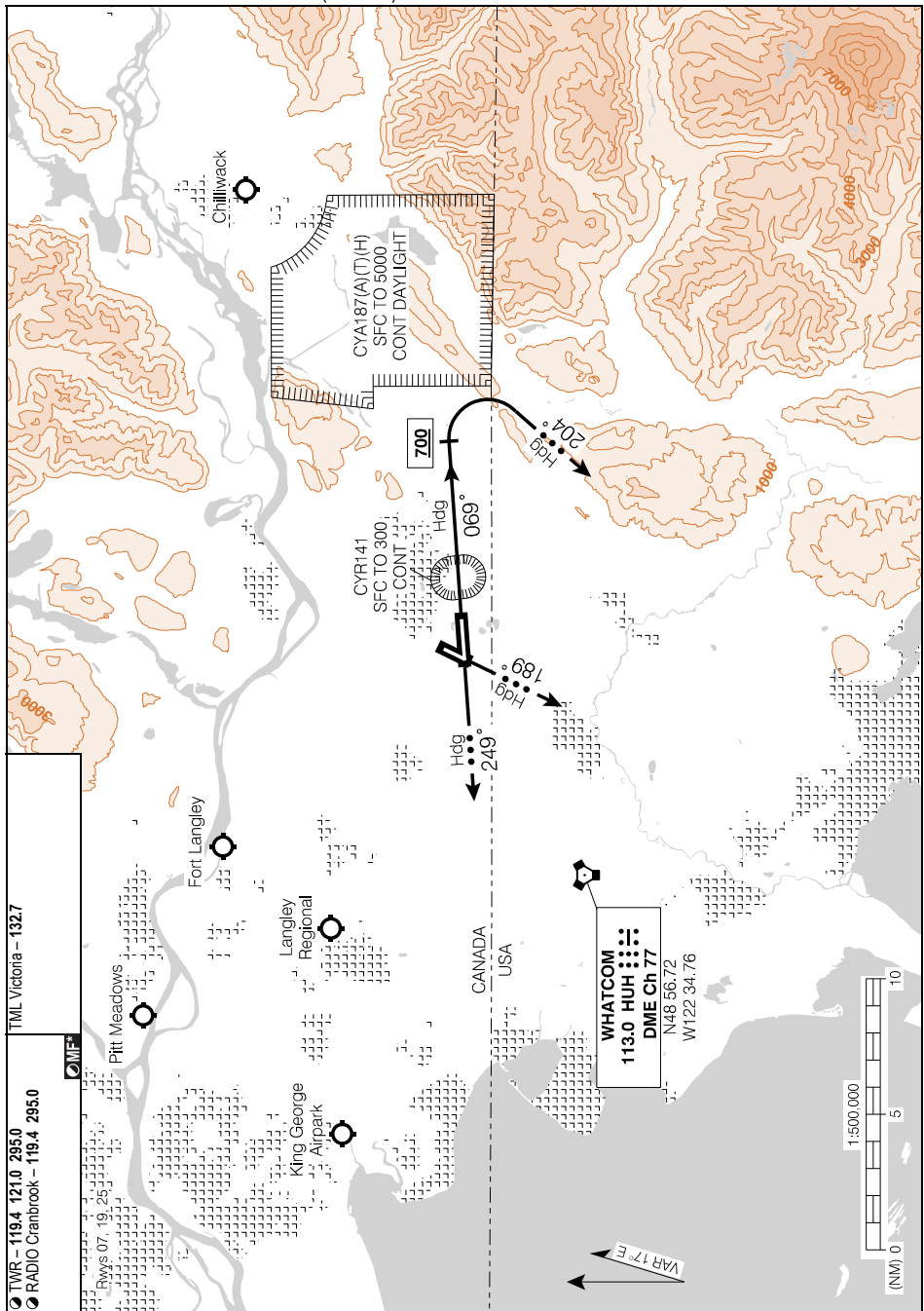
GROUND SPEED	90	120	140	160	180	200	250	300
260 FT/NM	390	520	610	700	780	870	1090	1300
410 FT/NM	620	820	960	1100	1230	1370	1710	2050

**NOTE:** Refer to noise abatement procedures for additional requirements.

## Communication Failure

If no radio contact with Departure Control by published/assigned altitude:

1. Select transponder code 7600;
2. Continue to "HUH" VORTAC then via filed/assigned route;
3. Continue climb to flight planned/assigned altitude/flight level 5 minutes after departure.



Source of Canadian Civil Aeronautical Data: © 2019 NAV CANADA All rights reserved