

### Departure Route Description

**Rwy 07 – ½:** Restricted to Cat C & D acft only. Requires a minimum climb gradient of **480 ft/NM to 4700**. Climb hdg **069° to 1800**. Then climbing **RIGHT** turn hdg **204°** for vectors to filed/assigned route. Contact Victoria Terminal passing **1500** unless instructed otherwise by ATC. Maintain **5000** or as assigned.

DEPARTURE CLIMB RATE V/V (FPM)

GROUND SPEED	90	120	140	160	180	200	250	300
480 FT/NM	720	960	1120	1280	1440	1600	2000	2400

**NOTE:** Refer to noise abatement procedures for additional requirements.

---

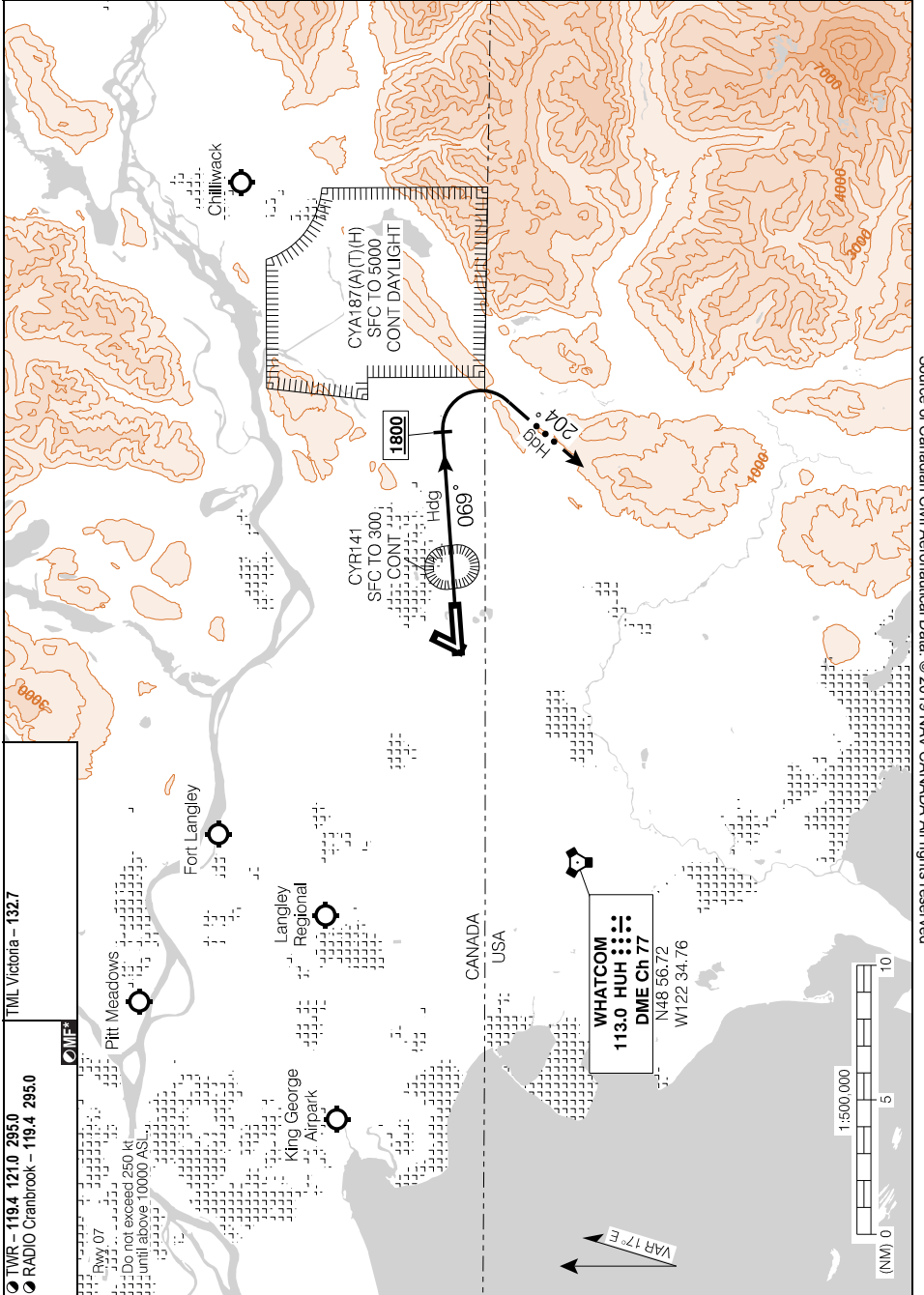
### Communication Failure

If no radio contact with Departure Control by published/assigned altitude:

1. Select transponder code 7600;
2. Continue to "HUH" VORTAC then via filed/assigned route;
3. Continue climb to flight planned/assigned altitude/flight level 5 minutes after departure.

SID (VECTOR)  
**CLEARBROOK TWO DEP (CLR BK2.)**

ABBOTSFORD, BC  
**CYXX**



Source of Canadian Civil Aeronautical Data: © 2019 NAV CANADA All rights reserved

**CLEARBROOK TWO DEP (CLR BK2.)**

**CYXX**

EFF 29 MAR 18